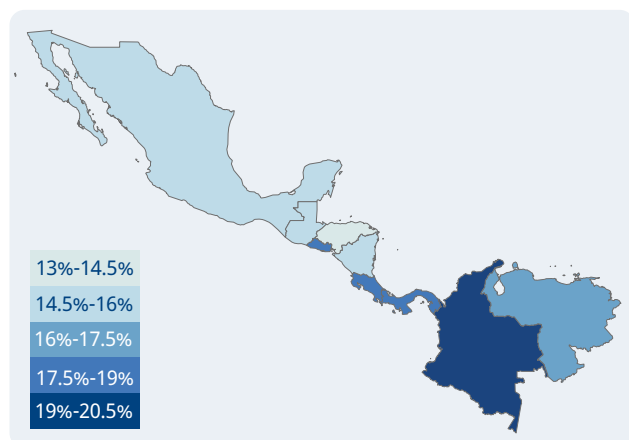


### Prevalence of vision loss

Population: **259 million** Countries: **9**



### Vision loss by age



Image: Jenna Montgomery; International Relief Teams

### Categories of vision loss

**1.3** million people  
0.7M Female  
0.6M Male

Blindness

**9.8** million people  
5.5M Female  
4.4M Male

Moderate to severe

**9.1** million people  
5.0M Female  
4.1M Male

Mild

**13.7** million people  
7.7M Female  
5.9M Male

Near

### The number of people with vision loss is growing

**14.6 million**

1990

**7.9 million**  
**6.7 million**

**33.9 million**

2020

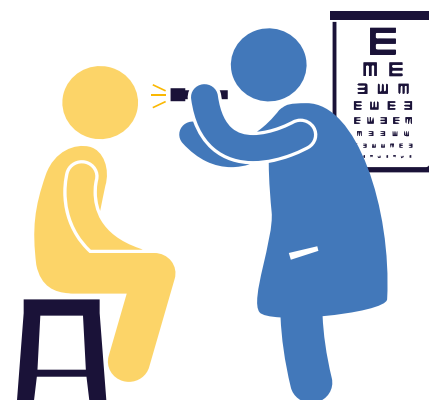
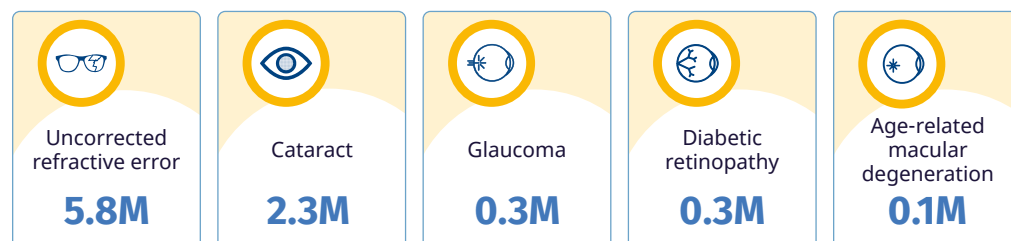
**18.9 million**  
**15.0 million**

**58.8 million**

2050

**32.8 million**  
**26.0 million**

### Top five causes of blindness and moderate to severe vision loss



### Eye care service indicators

#### Human resources

**9,082** ophthalmologists  
**15,530** optometrists  
**5,625** allied ophthalmic personnel

#### National eye health

No. countries reporting:  
Coordinators: **8**  
Committees: **9**  
Plans: **6**

#### Data

No. countries reporting:  
Prevalence surveys: **7**  
Service assessments: **1**

#### Cataract surgeries

**394,238** annually