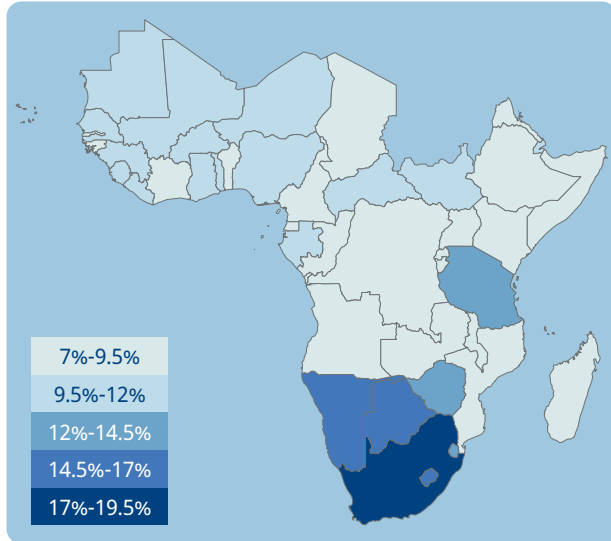


Prevalence of vision loss

Population: **1,092 million**



Vision loss by age



Children and adolescents (0-19)
20.8 million

Image: Louis Leeson



Adults (20-49)
28.8 million

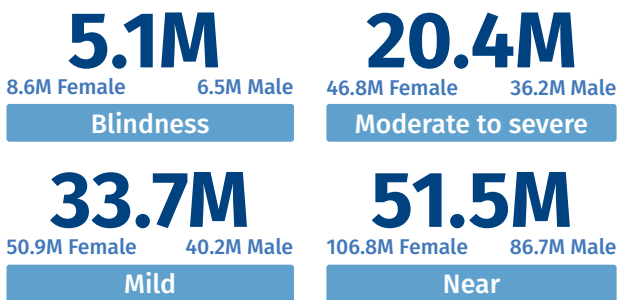
Image: Steele Burrow



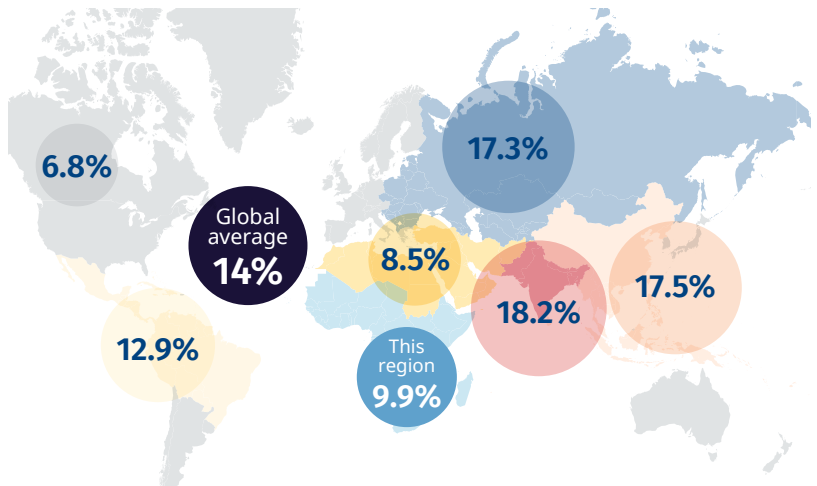
Older adults (50 and over)
61.1 million

Image: Lea Emerson

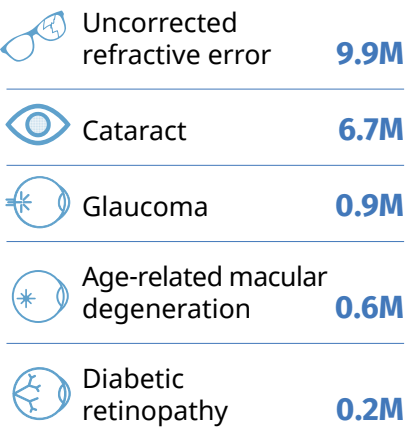
Categories of vision loss



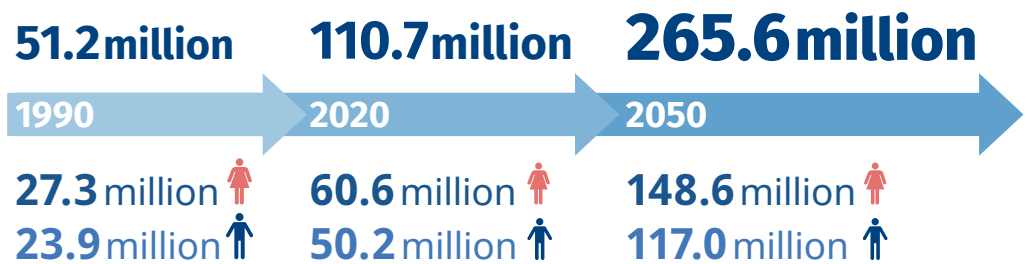
Prevalence of vision loss compared to other GBD Super Regions



Top five causes of blindness and moderate to severe vision loss



The number of people with vision loss is growing

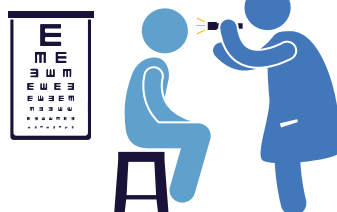


Eye care service indicators

Countries: **46**
Cataract surgeries
429,168 annually

National eye health
No. countries reporting:
Coordinators: **39**
Committees: **19**
Plans: **24**

Data
No. countries reporting:
Prevalence surveys: **29**
Service assessments: **11**



Human resources
2,199 ophthalmologists
9,299 optometrists
8,031 allied ophthalmic personnel

For further information and definitions visit <https://www.iapb.org/learn/vision-atlas>

Data from VLEG/GBD 2020 model, via the IAPB Vision Atlas